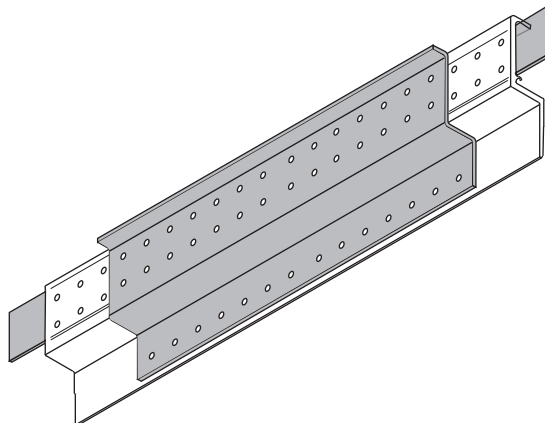
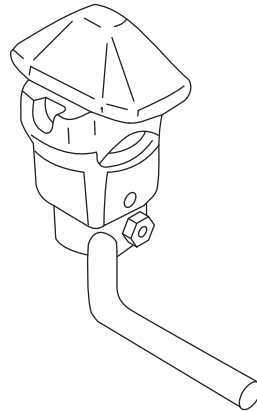


Locking Pins	15-1
Stoughton.....	15-1
Twist Locks	15-4
Stoughton.....	15-4
Stacking Post Assemblies	15-6
Stoughton.....	15-6
Intermediate Headers	15-6
Stoughton.....	15-6
Rear Corner Posts / Rear Bolsters	15-7
Stoughton.....	15-7
Front Corner Posts	15-7
Stoughton.....	15-7
Miscellaneous Parts	15-8
Stoughton.....	15-8
Container Rail Splice Plates	15-9
Stoughton.....	15-9
Lower Rails – Stoughton.....	15-10
Upper Rails – Stoughton.....	15-12



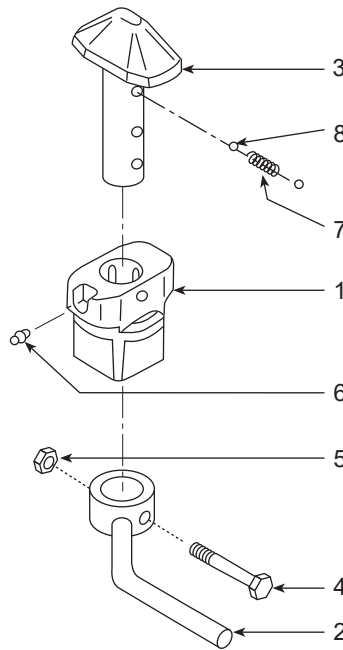
LOCKING PINS Stoughton

Note: More styles are available than are listed in this catalog. Please call with your specific application.



TWIST LOCK

Part Number	Remarks	Type
04 85496 008 01	Roadside	F77SNS
04 85496 008 02	Curbside	J1905.265.000-S



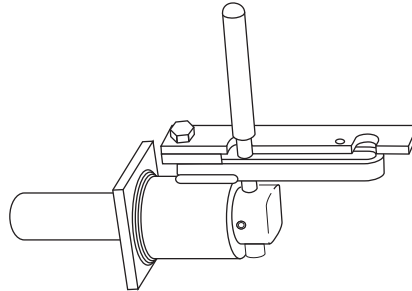
TWIST LOCK BREAKDOWN

Item No.	Part Number	Description	Quantity
1	J1905.228.001	Housing	1
2	J1905.265.100S	Handle Assembly	1
3	J1905.228.004	Locking Pin	1
4	J1000.004.004	Hex Bolt - 1/2" x 3"	1
5	J1000.005.003	Sec. Bolt - 1/2"	1
6	J1905.000.185	Grease Nipple	1
7	J1905.000.194	Spring	1
8	P16-01	Ball	2

LOCKING PINS

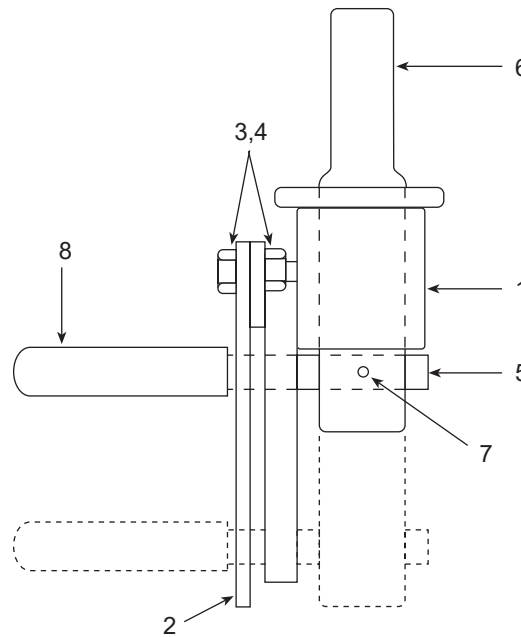
Stoughton

Note: More styles are available than are listed in this catalog. Please call with your specific application.



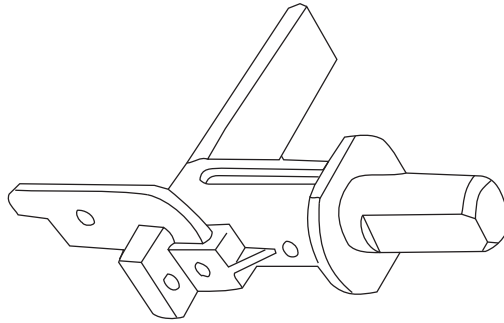
FRONT PIN LOCK

Part Number	Remarks
04 85507 100 00	Roadside
04 85507 200 00	Curbside



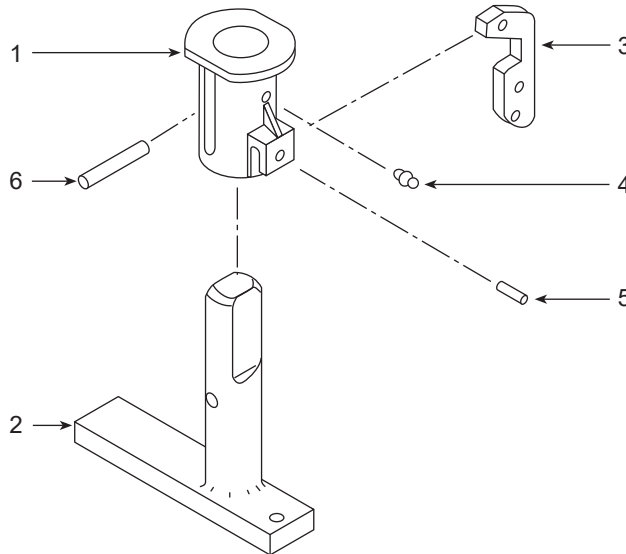
FRONT PIN LOCK BREAKDOWN

Item No.	Description	Quantity
1	Housing	1
2	Latch	1
3	Bolt	1
4	Nut	1
5	Handle	1
6	Locking Pin	1
7	Tension Pin	1
8	Grip	1



FRONT LOCKING PIN ASSEMBLY

Part Number	Remarks	Type
04 85496 008 01	Roadside	FB88HL
04 85496 008 02	Curbside	FB88HL
04 85496 009 01	Roadside	F77SNS
04 85496 009 02	Curbside	F77SNS

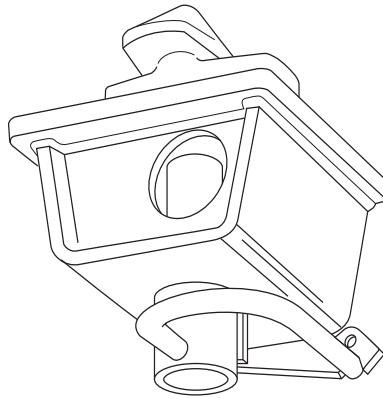


**FRONT LOCKING PIN BREAKDOWN
FB88HL STYLE SHOWN FOR REFERENCE ONLY**

Item No.	Description	Quantity
1	Housing	1
2	Handle Assembly	1
3	Latch	1
4	Grease Nipple	1
5	Rolled Pin - $\frac{5}{16}$ " x $\frac{7}{8}$ "	1
6	Rolled Pin - $\frac{3}{8}$ " x $2 \frac{3}{8}$ "	1

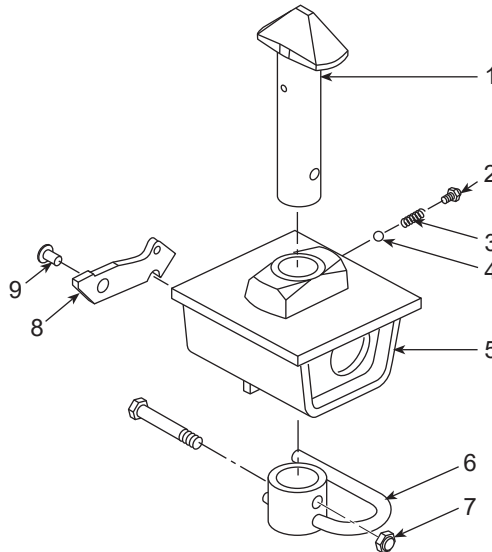
TWIST LOCKS

Stoughton



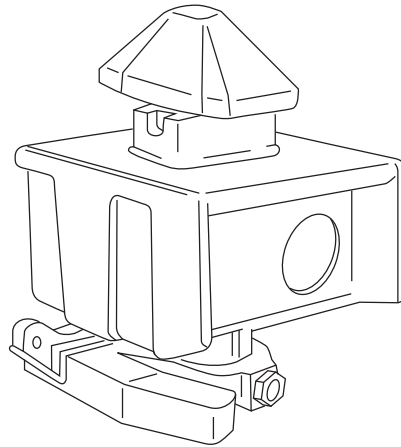
NON-RETRACTABLE TWIST LOCK

Part Number	Remarks
04 85506 100 00	Roadside
04 85506 200 00	Curbside



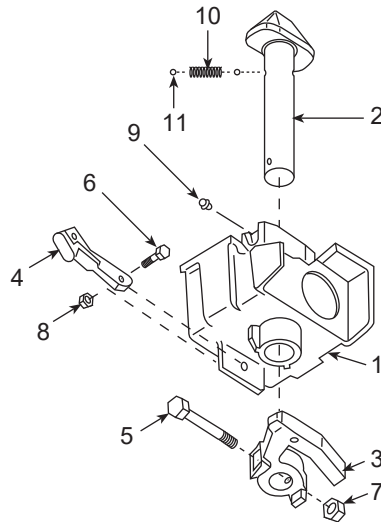
**NON-RETRACTABLE TWIST LOCK BREAKDOWN
SHOWN FOR REFERENCE ONLY**

Item No.	Description	Quantity
1	Stem or Pin	1
2	Grease Fitting	1
3	Spring	1
4	Ball	1
5	Housing Assembly	1
6	Operating Handle Left Hand	1
6	Operating Handle Right Hand	1
7	M10 Nut	1
8	Latch	1
9	Rivet	1



TWIST LOCK

Part Number	Remarks
J1905.177.000	F33NS Style, Same Roadside and Curbside, Remove and Replace Handle

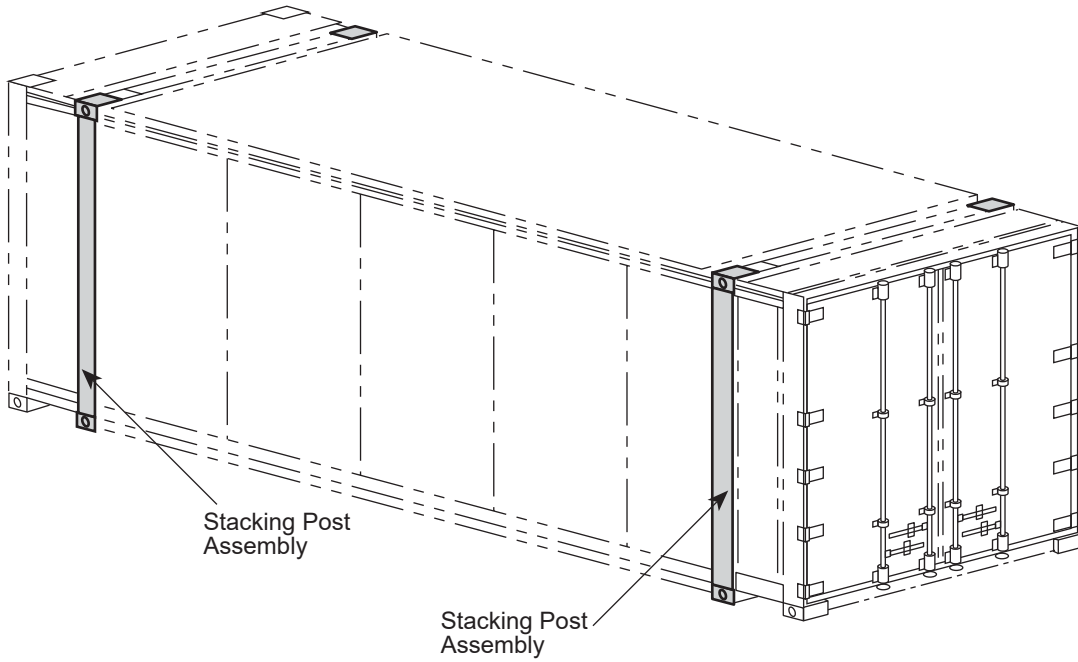


**NON-RETRACTABLE TWIST LOCK BREAKDOWN
F33NS STYLE SHOWN FOR REFERENCE ONLY**

Item No.	Description	Quantity
1	Housing	1
2	Locking Pin	1
3	Handle	1
4	Latch	1
5	Hex Bolt - 1/2" x 4"	1
6	Hex Bolt - 3/8" x 1 1/2"	1
7	Sec. Nut - 1/2"	1
8	Sec. Nut - 3/8"	1
9	Grease Nipple	1
10	Spring	1
11	Ball	2

STACKING POST ASSEMBLIES

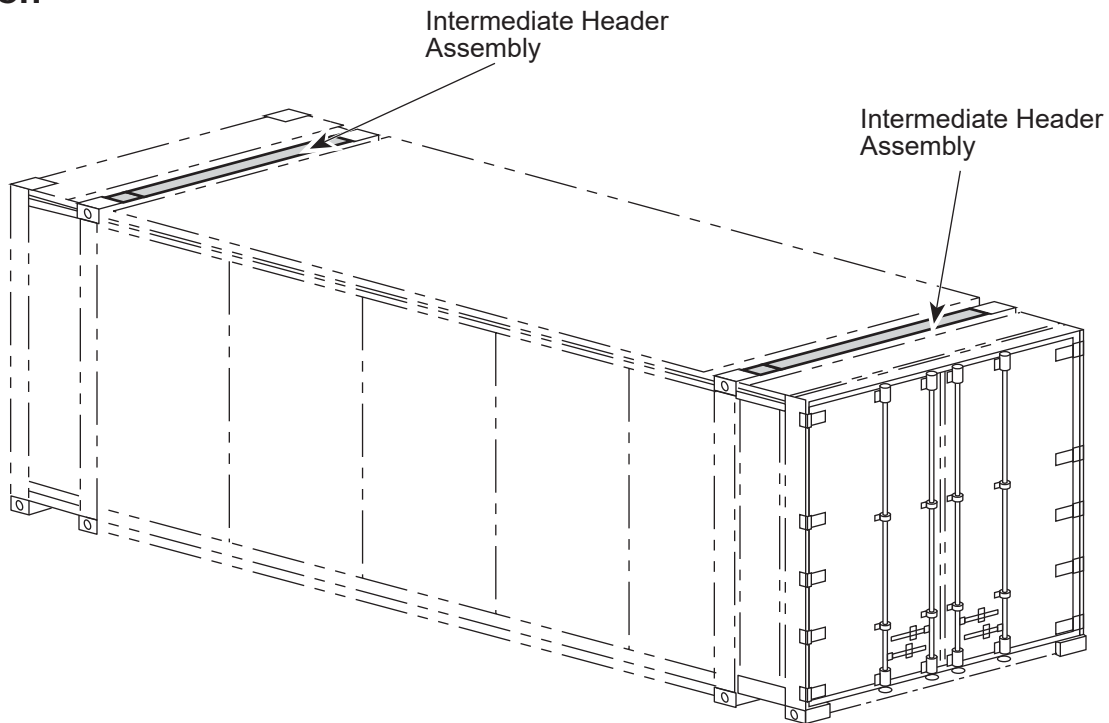
Stoughton



Call with VIN (Serial Number) for correct application

INTERMEDIATE HEADERS

Stoughton

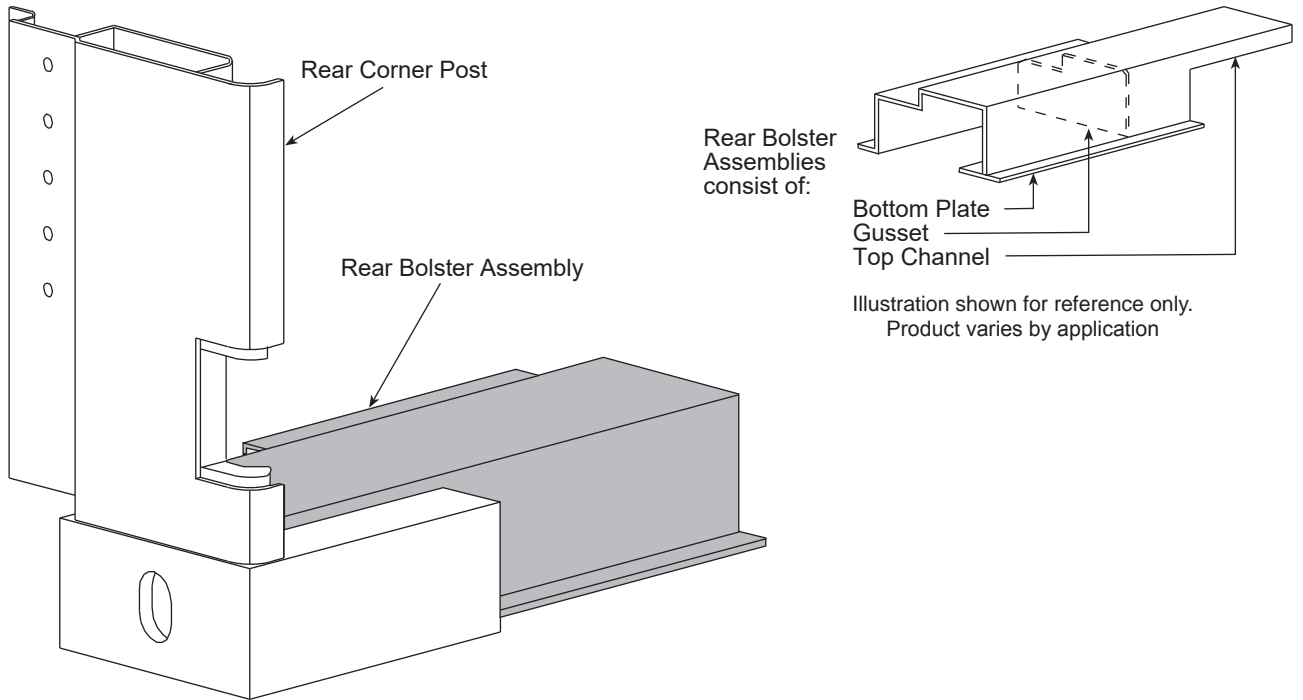


Note: Center latch for J.B. Hunt container chassis ("rat-trap") – 04 85684 000 00
"Repair" Kit for Center Latch – EB960-2P12

Call with VIN (Serial Number) for correct application

REAR CORNER POSTS / REAR BOLSTERS

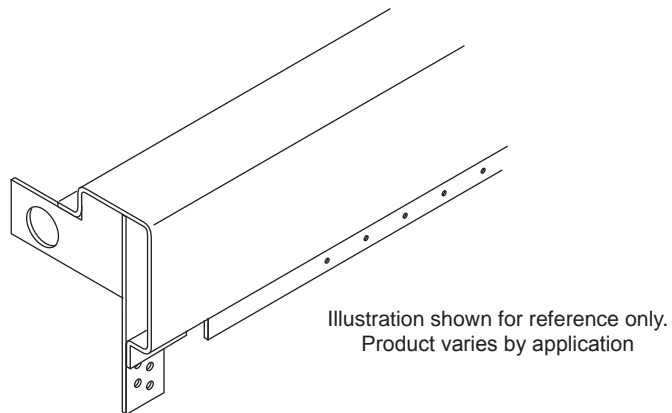
Stoughton



Call with VIN (Serial Number) for correct application

FRONT CORNER POSTS

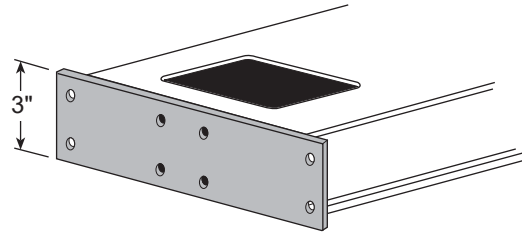
Stoughton



Call with VIN (Serial Number) for correct application

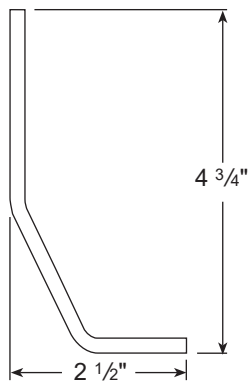
MISCELLANEOUS PARTS

Stoughton



REAR CROSSMEMBER WITH TUNNEL

Call with VIN (Serial Number) for correct application



TUNNEL SIDE LEG

Stoughton Number	Length
01 10085 000	126"

CONTAINER RAIL SPLICE PLATES

Stoughton

Upper and Lower Rail Splicing Statement for Stoughton Trailers, Inc.

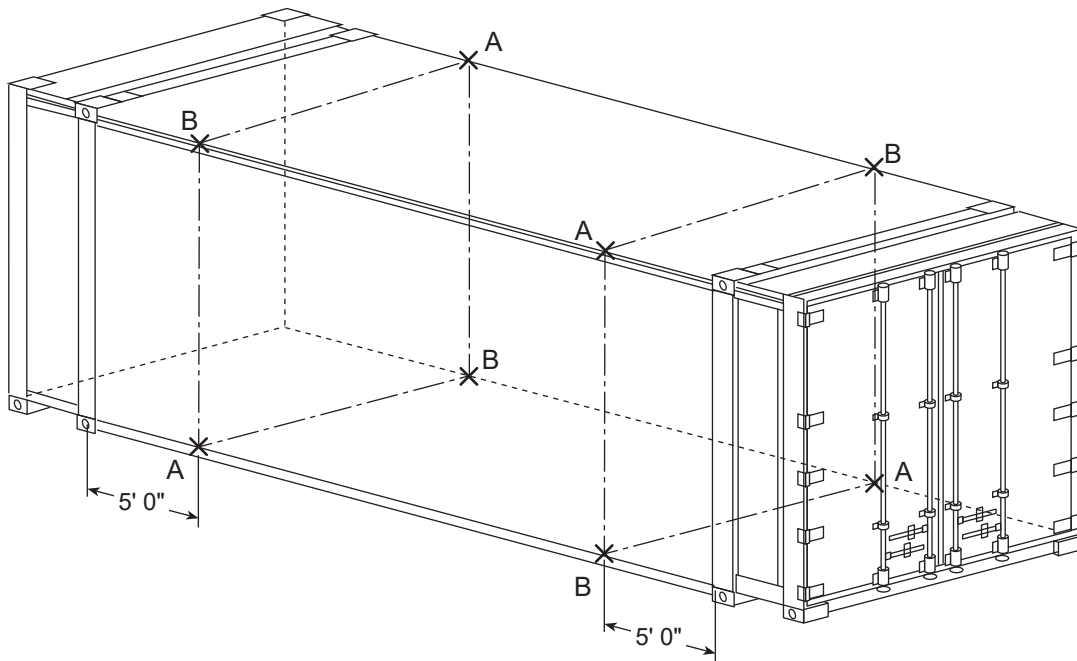
When repairs are to be made to the upper and/or lower rail of a container it is imperative that it be done properly.

The repair procedure and materials to be used should be according to the vehicle manufacture's recommended repair procedure for that particular trailer.

For the best results it is recommended by the A.A.R.(Association of American Railroads) no more than one splice section of rail is permitted in any upper or lower rail between the intermediate stacking frames. In addition, no more than one splice is permitted 5 feet from forward stacking frame of container.

The splice material, number and type of fasteners should provide strength requirements equal to or better than the original section of rail.

With these things in mind, properly repairing the upper and/or lower rail should provide the container with the structural integrity required of it for its useful life.



Permissible Splice Locations

If splice(s) exist(s) at any "A" location, then splice is permitted at any other "A" location(s). If splice(s) exist(s) at any "B" location, then splice is permitted at any other "B" location(s). Neither "A" location may be spliced if either "B" location on the same side is spliced. Neither "B" location may be spliced if either "A" location on the same side is spliced.

Note: No more than one splice section of rail is permitted in any upper or lower rail.

Important Notice

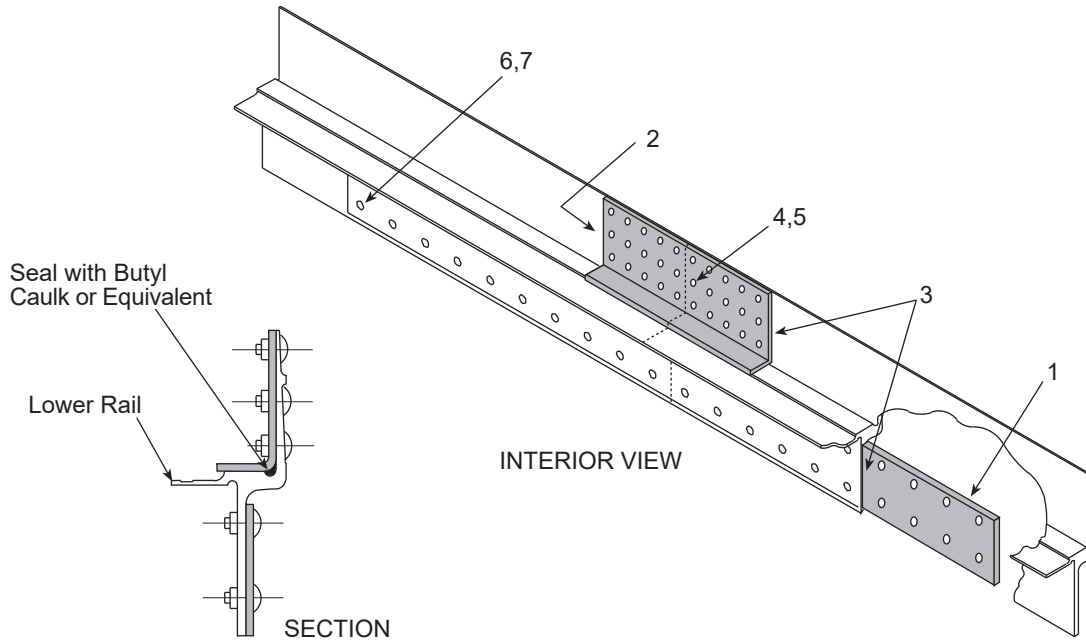
Absolutely no welding is to be used when structural repairs are done to extruded aluminum upper and lower rails. Upper and lower rails on all containers are made from a heat treated aluminum alloy, 6061-T6, with specific strength features required for containers.

CONTAINER RAIL SPLICE PLATES

Lower Rails – Stoughton

Lower Rail Splice Procedure

- Do not weld on the lower rail.
- On containers, the splice is to be made 12" forward of the centerline of a sidewall post.
- Holes for fasteners are to be transfer drilled.

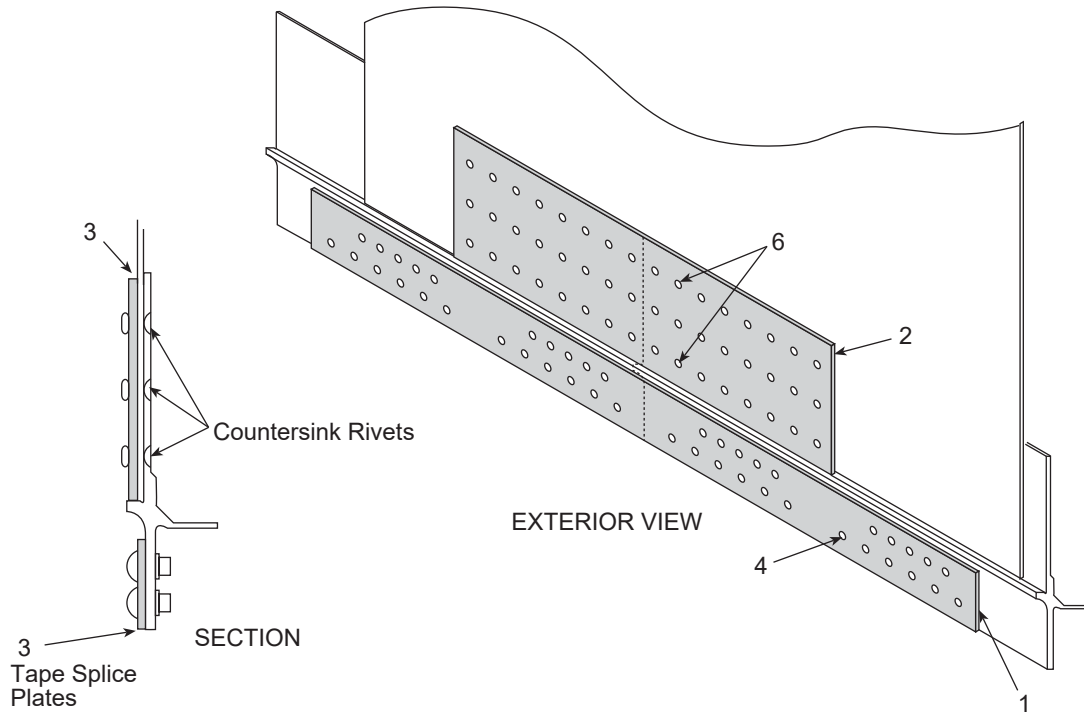


Item No.	Part Number	Description	Quantity
1	01 07983	Inner Splice Plate	1
2	01 10651	Outer Splice Plate	1
3	04 85011	Tape Sealant 4" Wide	52"
4	04 97012	* Magna Grip Pin MGPB-R8-10-CA	30
5	04 97013	* Magna Grip Collar MGC-R8-C	30
6	04 97001	* Magna Grip Pin MGPB-R8-12-CA	40
7	04 97002	* Magna Grip Collar MGC-R14-C	40

CONTAINER RAIL SPLICE PLATES Lower Rails – Stoughton

Lower Rail Splice Procedure

- Do not weld on the lower rail.
- On containers, the splice is to be made 12" forward of the centerline of a sidewall post.
- Holes for fasteners are to be transfer drilled.



FOR CONTAINERS WITH BOTTOM RAIL SECTION 02 13840

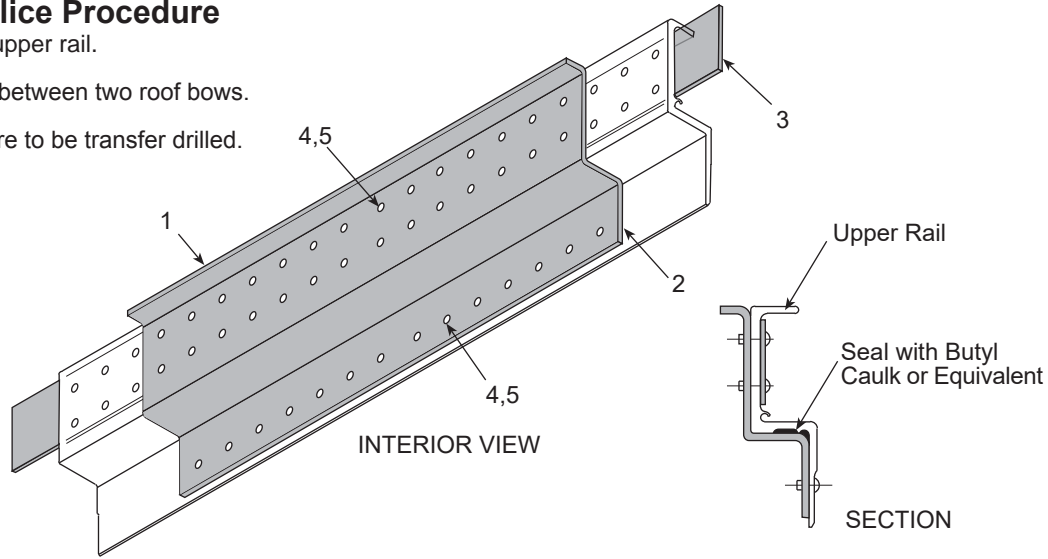
Item No.	Part Number	Description	Quantity
1	01 15805	Lower Splice Plate	1
2	01 15806	Upper Rail Splice Plate	1
3	04 85011	Tape Sealant 4" Wide	60"
4	04 97001	* Magna Grip Pin 3/8 Dia. x .125-.875	44
5	04 97002	* Magna Grip Collar 3/8 Dia.	44
6	04 98055 750 XX	Rivet, CSK HD, 1/4 Dia., 2117-T4 Alum.	48

CONTAINER RAIL SPLICE PLATES

Upper Rails – Stoughton

Upper Rail Splice Procedure

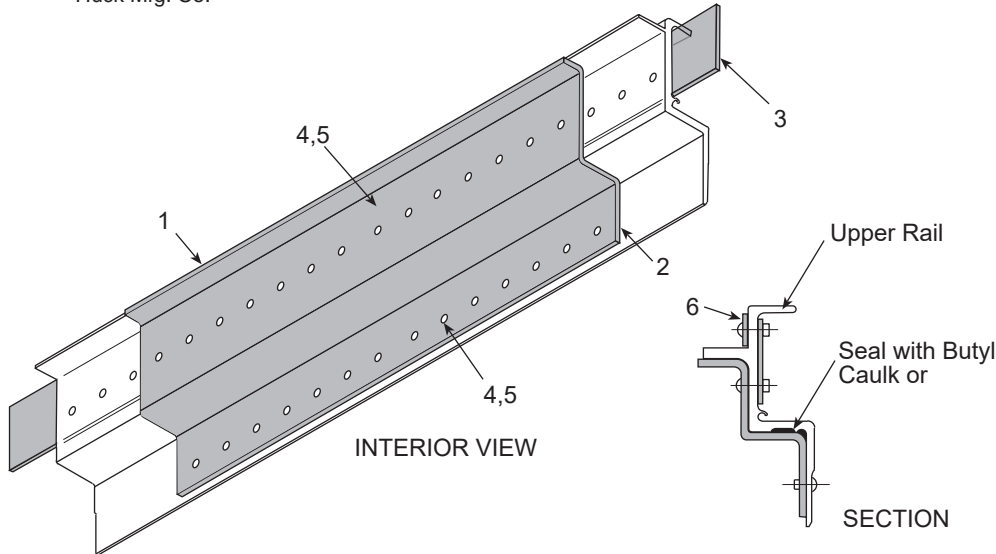
- Do not weld on the upper rail.
- Splice is to be made between two roof bows.
- Holes for fasteners are to be transfer drilled.



FOR CONTAINERS WITH UPPER RAIL SECTION 02 10205

Item No.	Part Number	Description	Quantity
1	01 10658	Inner Rail Splice Plate	1
2	04 85011	Tape Sealant 4" Wide	40"
3	01 10640	Outer Rail Splice Reinforcement	1
4	04 97012	* Magna Grip Pin MGPB-R8-10-CA	58
5	04 97013	* Magna Grip Collar MGC-R8-C	58

*Huck Mfg. Co.



FOR CONTAINERS WITH UPPER RAIL SECTION 02 09827

Item No.	Part Number	Description	Quantity
1	01 10639	Inner Rail Splice Plate	1
2	04 85011	Tape Sealant 4" Wide	40"
3	01 10640	Outer Rail Splice Reinforcement	1
4	04 97012	* Magna Grip Pin MGPB-R8-10-CA	58
5	04 97013	* Magna Grip Collar MGC-R8-C	58
6	01 10646	Upper Rail Splice Reinforcement	1

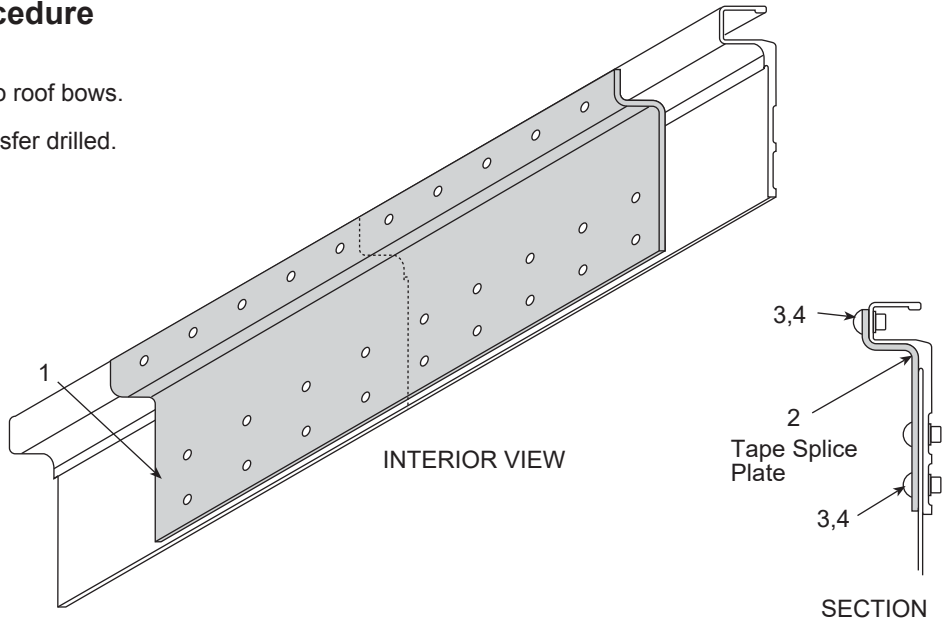
*Huck Mfg. Co.

CONTAINER RAIL SPLICE PLATES

Upper Rails – Stoughton

Upper Rail Splice Procedure

- Do not weld on the upper rail.
- Splice is to be made between two roof bows.
- Holes for fasteners are to be transfer drilled.



FOR CONTAINERS WITH UPPER RAIL SECTION 02 13865

Item No.	Part Number	Description	Quantity
1	01 15804	Upper Rail Splice Plate	1
2	04 85011	Tape Sealant 4" Wide	36"
3	04 97012	* Magna Grip Pin MGPB-R8-10-CA	28
4	04 97013	* Magna Grip Collar MGC-R8-C	28

*Huck Mfg. Co.

