

# STOUGHTON GRAIN TRAILER



**STOUGHTON**®





## GRAIN TRAILER

Designed with years of experience in quality and craftsmanship, the continuously improving Stoughton grain trailer is built using proven components, thorough testing and the same durability and value you have come to expect from Stoughton.

Stoughton grain trailers are available in 34-foot, 40-foot and 42-foot lengths with a wide array of features and options in 8 models to fit your unique needs. Stoughton trailers are built to last, reducing your overall cost of ownership.



# BUILT TO LAST

## Composite Front Wall & Stainless Steel Front Corners

Our new front wall is made of composite panels providing greater durability, strength and stability. Stainless steel front corners are standard on the Stoughton grain trailer.

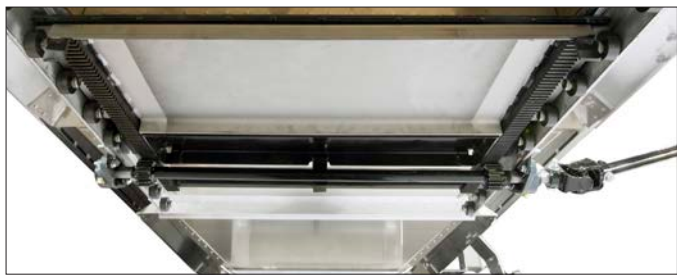
## FASTER, BETTER CLEANOUT

All hoppers come standard with a 34° grain trailer slope for faster and better cleanouts.



## 2-STAGE HOPPER DOOR

Constructed of corrosion resistant materials, the "easy-opening" 2-stage door significantly decreases the amount of torque needed by the operator to begin emptying the load.



## REMOVABLE INNER LINER

The liner is now removable, enabling easy removal of the liner panels to service the trailer components behind the liner panels.



## REINFORCED DIVIDER RAIL

The gauge of the divider rail is 25% thicker to provide additional strength.



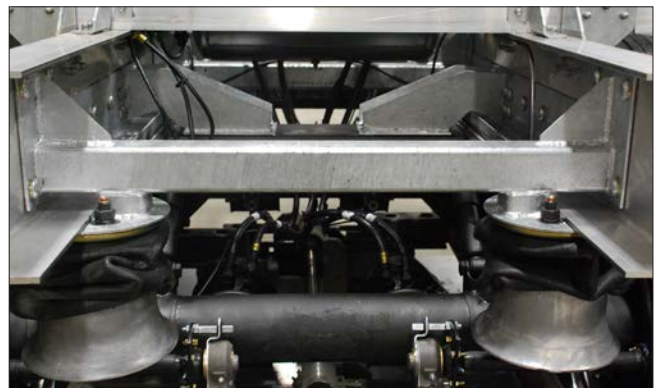
## JOST LEGS UL541

Jost landing gear legs come standard on all hoppers and have a ten-year warranty.



## HOT-DIPPED GALVANIZED STEEL SUPPORTS

Standard on all aluminum subframe grain trailers are hot dipped galvanized steel supports which connect the subframe to the cross members. In combination with the aluminum subframe, this offers a more durable and corrosion resistant solution.



## OPTIONAL FEATURES

- Stainless Steel Rear Panels
- Shur-Co 4500 HD Electric Tarps
- Shur-Co Pro Traps
- Galvanized Landing Gear
- Super Singles
- Disc Brakes
- Lift Axles

# IT'S IN THE DETAILS

## FRONT UPPER RAIL & TOP SHELF

The front upper rail and top shelf have been redesigned to improve strength.



## UPPER REAR LIGHTS

The lights on the upper rear header of the trailer now function as brake lights and turn signals, improving visibility and safety.



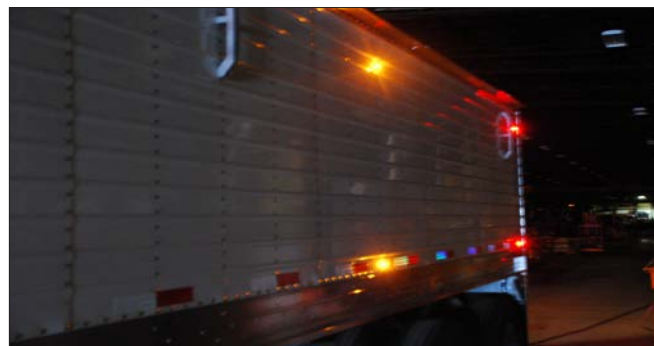
## INTEGRATED TRAP LIGHTS

The patented integrated lights are standard, offering a superior solution when unloading at night. Each trap and crank station is equipped with built-in LED lights for better visibility when unloading at night.



## 2-ROW MINI LED LIGHTS

All Stoughton grain trailers come standard with two rows of 7 mini LED lights on 40- and 42-foot trailer models. The lights are grommet mounted, easy to replace and carry a lifetime warranty.



# GRAIN TRAILER MODELS

Trailer Size	Trap Size	Ground Clearance	Slope Angle	Cu. Ft.	Bushels	Estimated Weight*
34' x 96" x 68"	20" x 29"	24"	34°	1120	900	8260 lbs.
34' x 96" x 74"	20" x 29"	24"	34°	1230	990	8370 lbs.
40' x 96" x 68"	29" x 31"	24"	34°	1370	1100	8820 lbs.
40' x 96" x 74"	29" x 31"	24"	34°	1495	1200	8900 lbs.
42' x 96" x 68"	29" x 31"	24"	34°	1400	1125	8990 lbs.
42' x 96" x 74"	29" x 31"	24"	34°	1555	1250	9100 lbs.
42' x 102" x 74"	29" x 46"	18"	38°	1800	1450	9450 lbs.
42' x 102" x 80"	29" x 46"	18"	38°	1930	1550	9560 lbs.

\*Estimated weight based on aluminum subframe and aluminum wheels. Steel subframe adds approx. 140 lbs. Steel wheels add approx. 190 lbs.

## TRAILER FINANCING OPTIONS

Tailored solutions are part of what we do at Stoughton Trailers. The Stoughton Trailers Acceptance Company (STAC) offers competitive, customer-focused plans from an experienced staff that is there to help you and your business obtain the equipment you need to keep running strong. With 30 years of leasing experience, STAC is the largest captive leasing company in the industry.

### STAC OFFERINGS

- Competitive Rates
- Flexible Terms
- Low Documentation Requirements
- Direct Access to Decision Makers; Fast Turn-Around Time
- Over 35 Years of Equipment Lending Experience
- Offers both Lease and Finance Contracts
- All Contracts Internally Serviced - We Are Not a Broker
- All Contracts Funded Internally - Large Lending Limits to Qualified Customers

### For more information, contact:

Kean Kasper 608/873-2542 | [KKasper@StoughtonTrailers.com](mailto:KKasper@StoughtonTrailers.com)  
 Doug Manthe 608/873-2536 | [DManthe@StoughtonTrailers.com](mailto:DManthe@StoughtonTrailers.com)  
 Tammy Serketich 920/208-5480 | [TammyS@StoughtonTrailers.com](mailto:TammyS@StoughtonTrailers.com)

IT'S IN THE DETAILS



STO-GT-500-8/22