

PureBlue™

REFRIGERATED
TRAILER



STOUGHTON®





PureBlue™

REFRIGERATED TRAILER

BORN TO BE BETTER

From the highly engineered sidewalls and composite rear doors to a strong durable floor, Stoughton® left no stone unturned to design a refrigerated trailer that is thermally efficient, lightweight, safe and long lasting – PureBlue™.

Stoughton's insulating process along with the use of high-strength composite material, and its unique sealing and bonding techniques ensure that PureBlue delivers more thermal efficiency and safety than competitive trailers on the road today. Its innovative design makes it lightweight without sacrificing strength and stability. In addition, the composite framing, composite stringers in the floor and composite rear doors of PureBlue are pulled together by an innovative, contemporary design that's easy to repair using today's standard methods.

Hot-dip galvanizing of the steel frame components, slider box and the rear underride guard protect against corrosion and extend component life. The trailer is designed to reduce maintenance and uphold consistent temperatures. With decades of experience in quality and craftsmanship, PureBlue has been designed with the same durability and value fleets have come to expect from Stoughton.



GALVANIZED STEEL COMPONENTS

The steel frame components, slider box and the rear underride guard are hot-dip galvanized for superior protection against corrosion and to significantly extend component life. The process reduces maintenance, downtime and additional costs by eliminating the need for paint refurbishment, and it creates noticeable increases in production sustainability with fewer negative environmental impacts.

REFRIGERATION UNIT MOUNTING FRAME

PureBlue is equipped with a lightweight, high-strength, low conductivity refrigeration unit mounting frame, which accepts all refrigeration unit types and manufacturers. The composite material inhibits the heat generated by the refrigeration unit from transferring into the trailer.

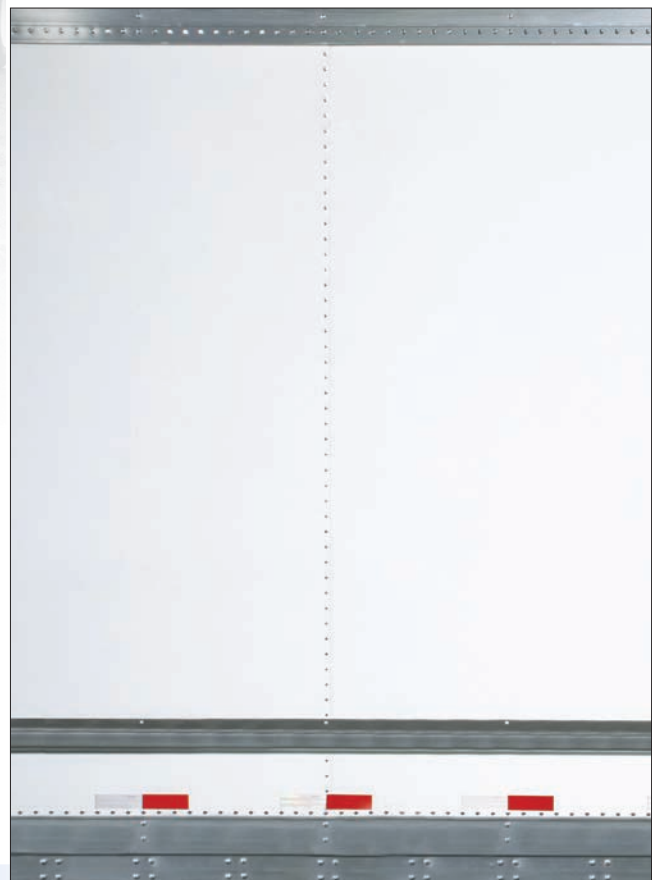
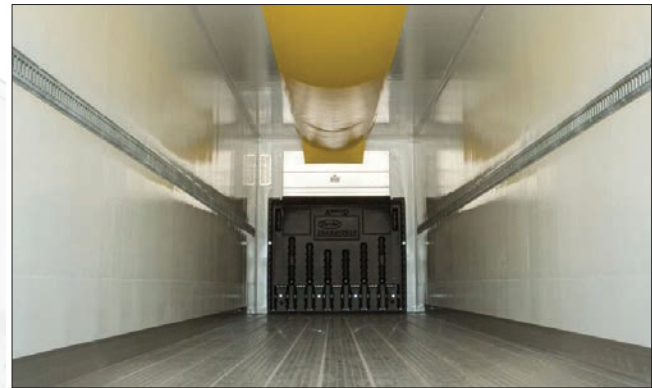
PLATEN FOAMING PROCESS

The Stoughton platen foaming insulation process ensures thermal efficiency in the trailer sidewalls, ceiling, front wall, doors and floor. Each subassembly is insulated and then the trailer is assembled. Once assembled, all connections are separately foamed to ensure an airtight seal. This method provides a more consistent insulation process, leading to flat and smooth surfaces, which are less susceptible to damage.

BONDED SIDE POSTS

The side posts in the intermediate area between the trailer 4-foot panel-to-panel connections are bonded to increase thermal efficiency and to ensure a smoother wall surface. The bonded side posts stabilize the inner liner between panel-to-panel connections and reduce the number of rivets by 704 per sidewall. The reduced number of rivets inhibits heat flow, prevents water intrusion and provides a better surface for graphics.

IT'S IN THE DETAILS



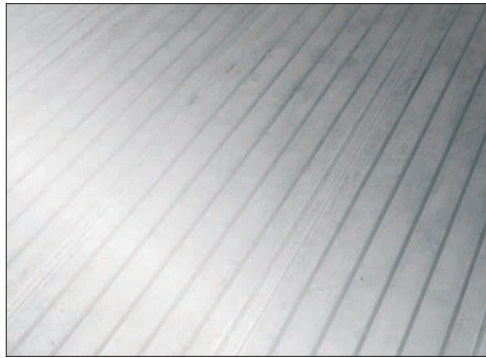
FULLY ENCLOSED FLOOR DESIGN

The extruded aluminum heavy-duty duct floor provides optimum support for your loads even in high-use areas. The fully enclosed design has a knurled edge top surface for skid resistance. There's no wood in the entire structure, which increases the life of the trailer.

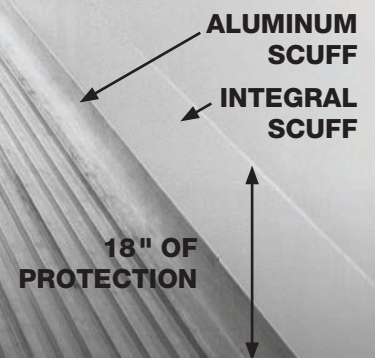
DUAL SIDEWALL SCUFF GUARDS

The rivet-free 6-inch aluminum scuff band and 12-inch integral scuff liner protects the sidewall from damage during loading and unloading.

OPTIONAL FLAT FLOOR



STANDARD HEAVY-DUTY NON-SKID FLOOR





SIGNED, SEALED AND DELIVERED

COMPOSITE REAR DOOR

The simple, high-strength design of the composite rear door optimizes thermal efficiency and reduces weight. Fewer parts and no fasteners simplify repair.

TRIPLE WIPER SEAL

The rear door of PureBlue is equipped with our exclusive triple wiper seal door gasket. The gasket retains contact pressure for a better lifetime seal, maintaining thermal efficiency. The seal prevents water intrusion and minimizes air loss to protect the interior of the trailer and your cargo from the outside elements. And, the snap-lock gasket is easily replaced without disassembling the entire door.



FLEET OPERATING SAVINGS

The table below indicates the value and savings when operating PureBlue.

Factor	PureBlue Savings	Benefit
Thermal Efficiency	Up to 13% More Efficient ¹	Reefer unit runs less to maintain temperature
Reefer Unit Run Time	Decreased up to 275 hours per year ²	Reduced run time saves on fuel costs
Weight Savings	Up to 560 pounds Lighter ³	Reduced trailer weight increases payload capacity

¹Third Party Independent Testing, compared to Industry Average

²Annual hourly usage based on 2,000 hour run time average

³Weight savings based on Stoughton competitive benchmark units, compared to Industry Average

REAR UNDERRIDE GUARD



The new rear underride guard comes standard with no additional cost and weight. It resists compartmental intrusion of an automobile when the location of impact is at 30% to 100% overlap of the width of the car to the guard. It complies with all applicable U.S. and Canadian regulations. The bolt-on design allows for easy repairability.

LIGHTEST SLIDER SUSPENSION

PureBlue comes standard with the lightest slider system in the industry, the Hendrickson ULTRAA-K® axle suspension system. It's optimized strength-to-weight ratio makes it the choice for weight conscious fleets.

ULTRAA-K® is a registered trademark of Hendrickson International.

ALUMINUM CROSS MEMBERS

5.25-inch extruded-aluminum cross members provide maximum support in the bay area for a strong yet lightweight floor.



OPTIONAL CORRUGATED SIDEWALL



IT'S IN THE DETAILS



DISTRIBUTED BY

STOUGHTON[®]

Stoughton Trailers LLC
416 S. Academy Street, Stoughton, Wisconsin 53589
608/873-2500 Fax 608/873-2575
StoughtonTrailers.com

STO 2-PC-CH-08/24