



# VIN Structure



**PARTS SALES**

*Your Make. Your Model. Your Part.™*

# Old Method

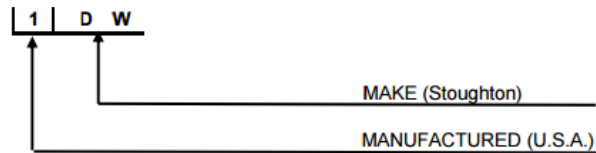
## Stoughton Trailers, LLC. VIN Identifier and designation data.

### 1. TYPICAL EXAMPLE:

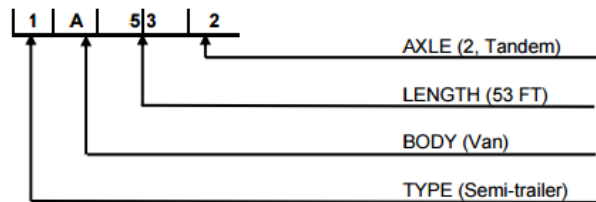
1 D W 1 A 5 3 2 5 Y S 6 3 0 5 0 1

### 2. TYPICAL UTILIZATION:

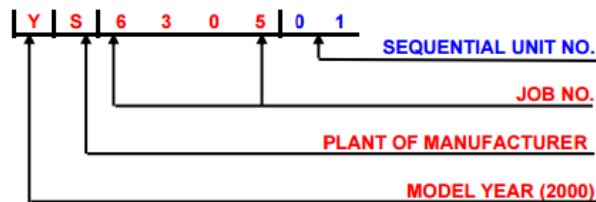
#### First Section:



#### Second Section:



#### Third Section: *Important: We need this ENTIRE Section for Parts Look-up by VIN #*



The series highlighted in RED is used in our Serial Lists

### 3. DESIGNATION DATA:

First Section:  
WMI - Registered with S.A.E. 1 D W

Second Section:

PRODUCT	Name	Code
	Semi-trailer	1
	Full-Trailer	2
	Dolly	3
	Chassis	C
	Container	

BODY	Van	A
	Platform	B
	Chassis & Doubles Dolly	C
	Container	U

LENGTH	24 FT	24
	26 FT	26
	27 FT	27
	30 FT	30
	31 FT	31
	32 FT	32
	35 FT	35
	40 FT	40
	42 FT	42
	43 FT	43
	45 FT	45
	48 FT	48
	50 FT	50

AXLE	(1) Single	1
	(2) Tandem	2
	(3) TRI	3

#### Third Section:

Model Year	2000	Y
	2001	1
	2002	2
	2003	3
	2004	4
	2005	5
	2006	6
	2007	7
	2008	8
	2009	9
	2010	A
	2011	B

Point of Manufacture	Stoughton, WI	S
	Brodhead, WI	B
	Evansville, WI	E

**STOUGHTON**<sup>®</sup>

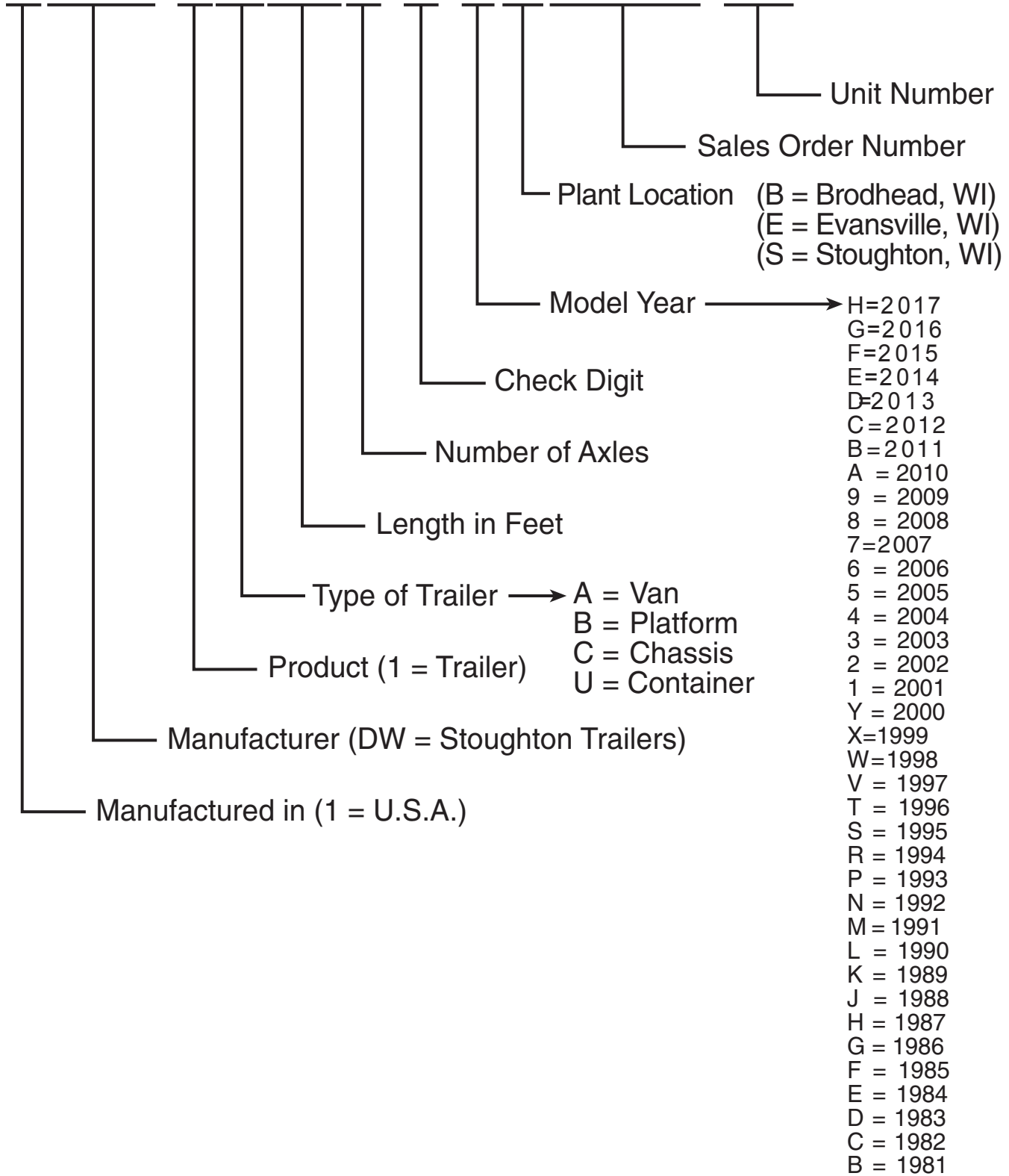
PARTS SALES

Your Make. Your Model. Your Part.™



# VEHICLE IDENTIFICATION NUMBER

# 1DW 1A482 0 JS5000 01



# New Method

New

No significance in last 6 sequential numbers

Will start with A\*\*\*\*\*

## VIN No. & Tag Change

MFD BY <b>STOUGHTON</b>	
STOUGHTON TRAILERS, LLC STOUGHTON, WI, USA	
DATE OF MANUFACTURE	02/16
GVWR	31751 KILOGRAMS / 70000 POUNDS
GAWR ALL AXLES	9072 KILOGRAMS ( 20000 POUNDS) WITH 295/75R22.5 (G) TIRES, 22.5X8.25 RIMS AT 655 KPA ( 95 PSI) COLD DUAL
CERTIFICATION - THIS VEHICLE CONFORMS TO ALL APPLICABLE FEDERAL MOTOR VEHICLE SAFETY STANDARDS IN EFFECT ON THE DATE OF MANUFACTURE SHOWN ABOVE.	
VIN	1DW1A5327HS A03259
OVERALL HEIGHT	13' 6" WITH 5th WHL. HT. 47"
MODEL	AVW-535T-S-C-AR
TYPE - TRAILER	
[Barcode]	
J0000546101	
CT00001345 1 0001	

Syteline Customer Order No.

VIN Serial No. (last 6 characters) without significance, serial assigned beginning with A00001 to eliminate chance of duplication

Syteline Job No. Bar Code w/ number below

Unit No. in Customer Order