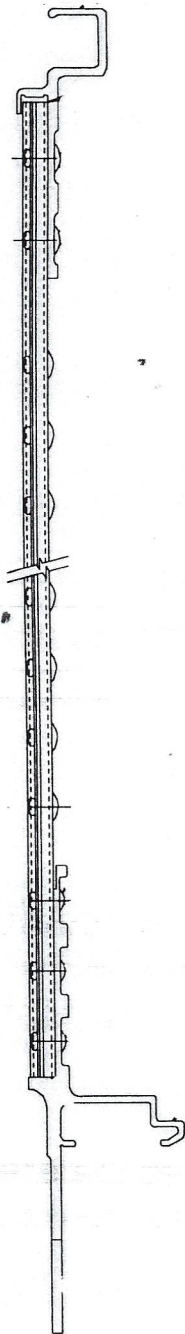




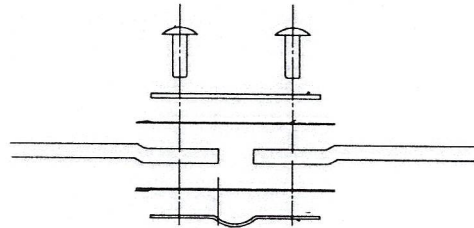
**GENUINE PARTS**

STOUGHTON PARTS SALES, LLC  
1112 VETERANS RD.  
STOUGHTON, WI 53589  
800-227-5391  
FAX: 608-873-2870

## 1st Generation Z-PLATE rivet detail



**04-98086-625-00** Panel to splice plate ONLY  
Not on top and bottom rail  
(1/4" X 5/8") (6053-T61 Alloy)



**04-98086-750-00** Where panels attach to  
top and bottom rail  
(1/4" X 3/4") (6053-T61 Alloy)

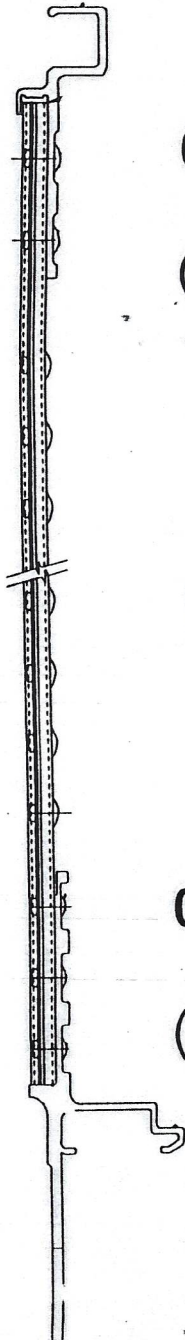
**04 98086-875-00** Where splice plates attach  
to top and bottom rail  
(1/4" X 7/8") (6053-T61 Alloy)



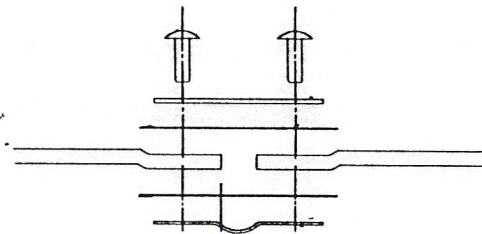
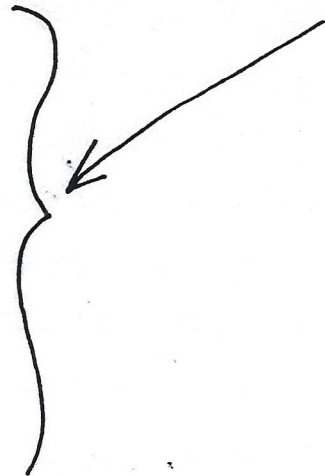
**GENUINE PARTS**

STOUGHTON PARTS SALES, LLC  
1112 VETERANS RD.  
STOUGHTON, WI 53589  
800-227-5391  
FAX: 608-873-2870

## 2nd Generation Z-PLATE rivet detail



**04-98086-688-XX** Panel to splice plate ONLY  
Not on top and bottom rail  
(1/4" X 11/16", 6053-T61 Alloy)



**04-98086-938-XX** Where splice plates attach  
to top and bottom  
(1/4" X 15/16", 6053-T61 Alloy)

**04-98086-812-XX** Where panels attach to  
top and bottom rail  
(1/4" X 13/16", 6053-T61 Alloy)

# Third Generation ZG Plates with thin-wall panels (2013)

